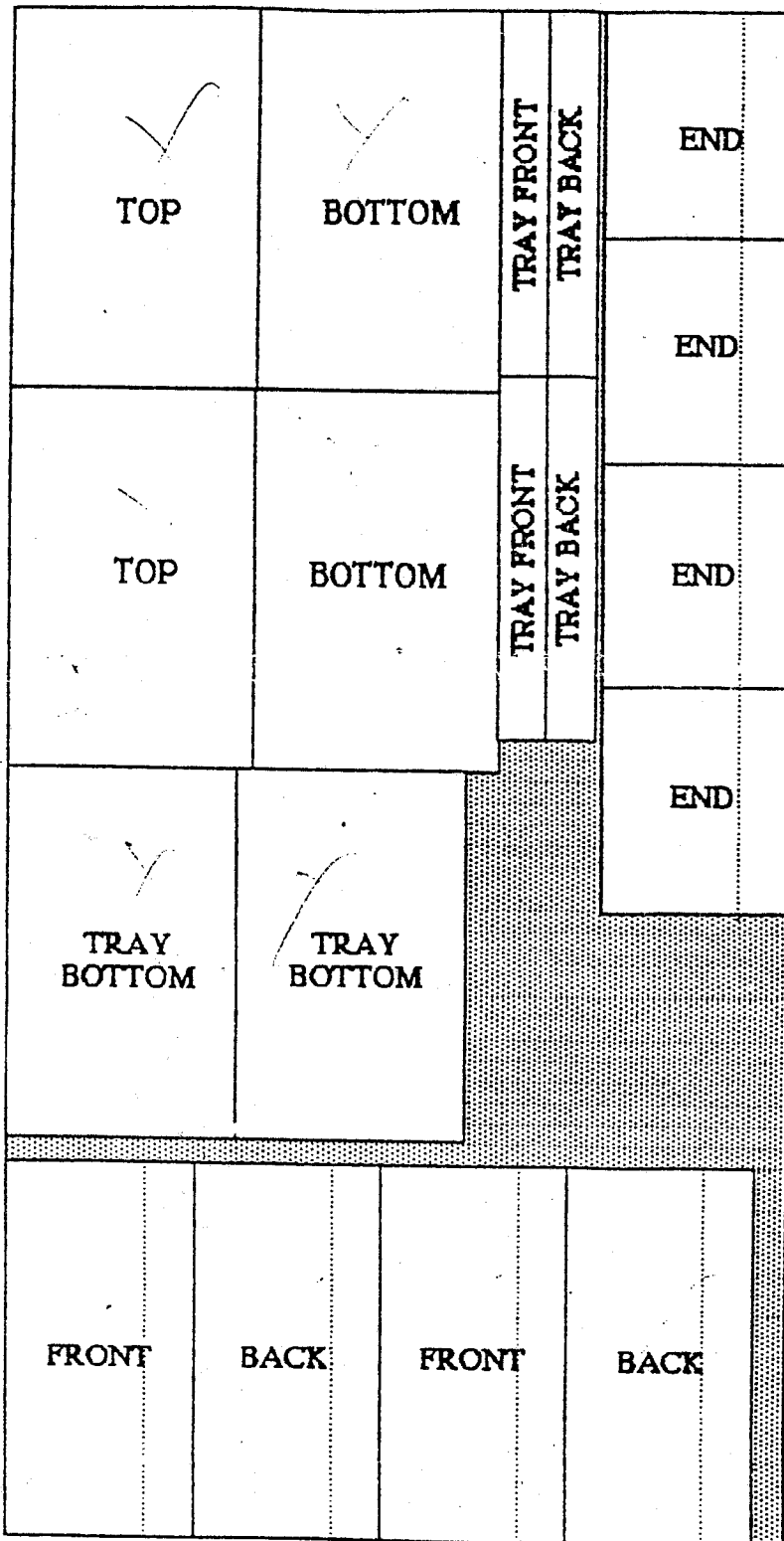


**CUTTING PLAN FOR TWO FOOTLOCKERS**  
**1 Sheet 3/8 A/B or A/C Exterior Grade Plywood**

11 1/2



Top:  
24 x 15

Bottom:  
24 x 15

Front:  
24 x 11 1/2

Back:  
24 x 11 1/2

End:  
14 1/4 x 11 1/2

Tray Bottom:  
23 x 14

Tray Front:  
23 x 2 1/2

Tray Back:  
23 x 2 1/2

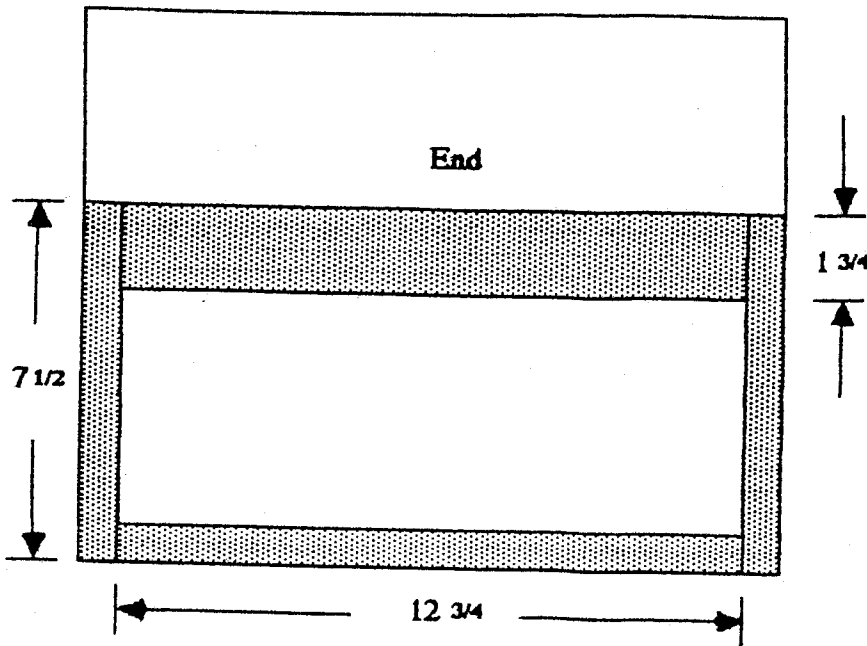
**NOTE:**  
 Tray ends are cut  
 from 1 x 4 stock  
 and are 13 1/4 x 2 1/2.

Interior framing is  
 3/4 x 3/4 actual, cut  
 from nominal 1 x 4  
 stock.

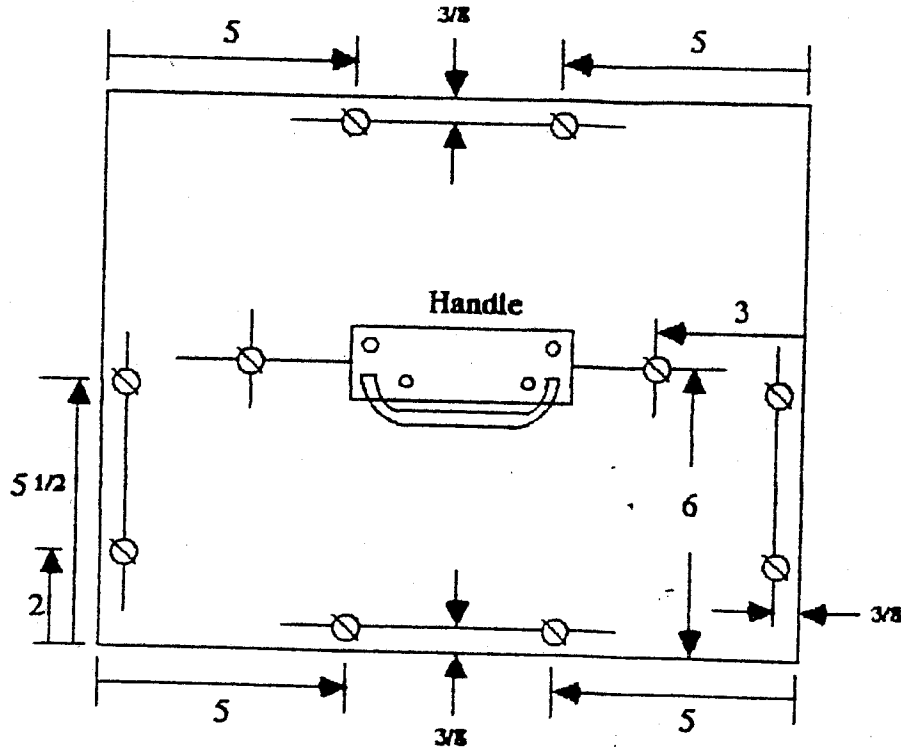
Two 8 ft 1 x 4 will  
 supply tray ends and  
 all interior framing.

23  
24

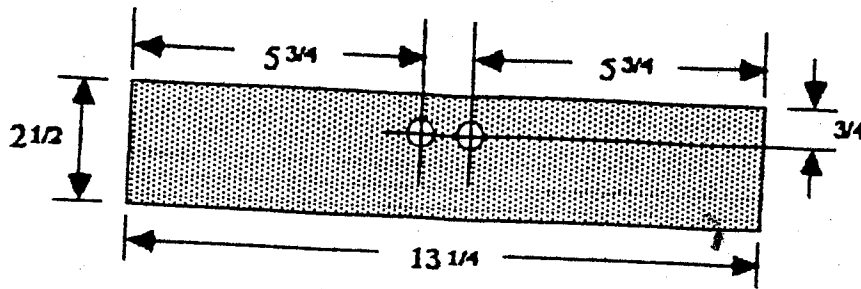
INTERNAL FRAMING  
(Cut from 1 x 4 stock)



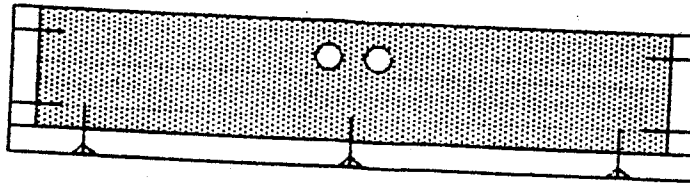
SCREWS & HARDWARE



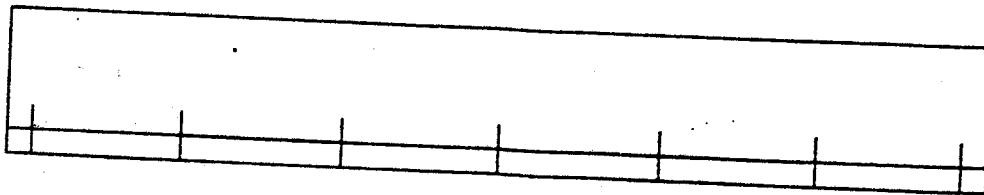
# TRAY CONSTRUCTION



Tray End - Detail  
( $\frac{1}{2}$ " holes)

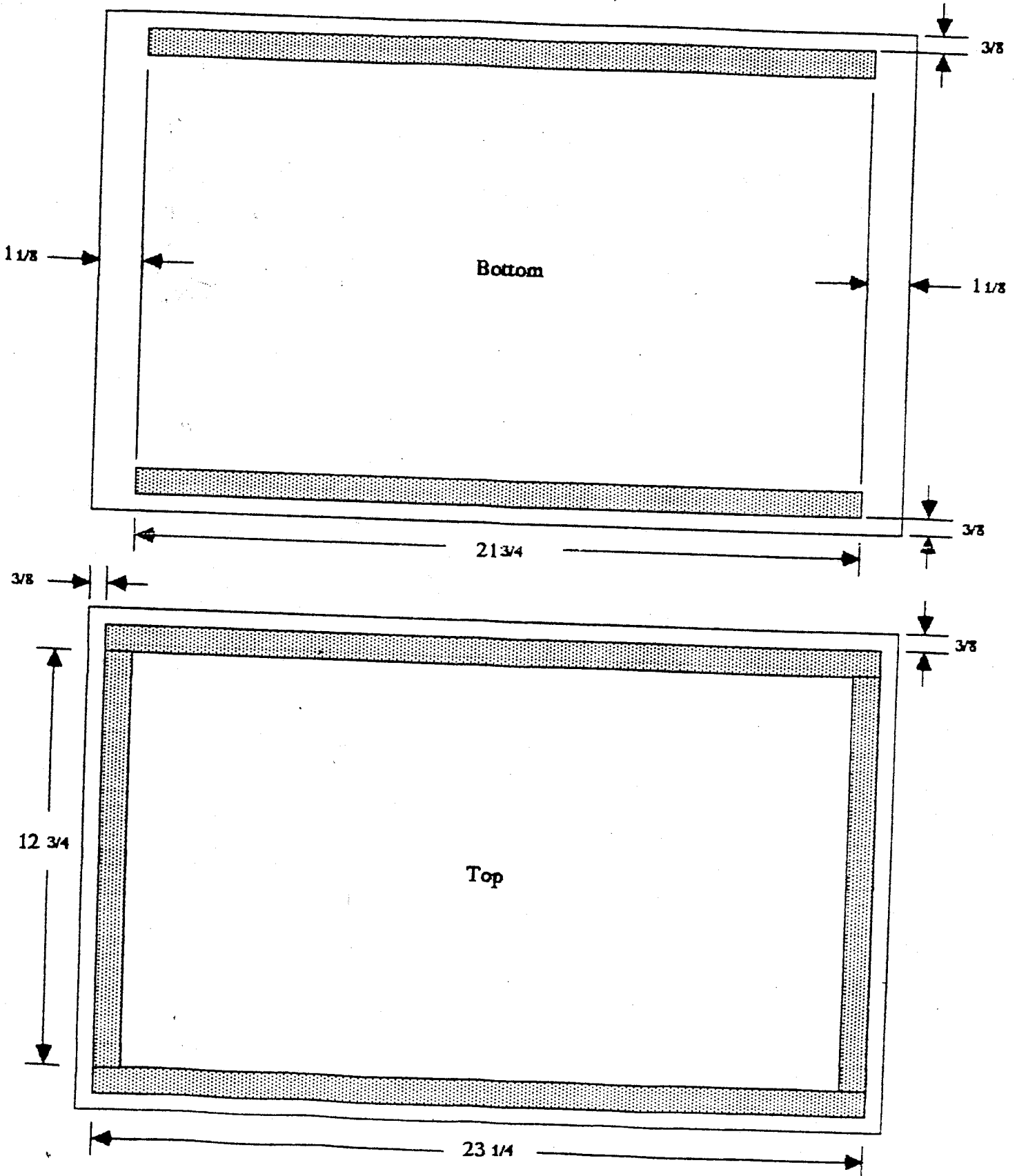


Tray Construction - End View  
(#7 x  $\frac{3}{4}$  wood screws in bottom,  
#2 finishing nails in sides)



Tray Construction - Front / Back View  
(Bottom nailed to sides with #2 finishing nails)

INTERNAL FRAMING DIAGRAM  
(Cut from 1 x 4 stock)



20  
32  
32  
38 4  
vd

# SCREWS & HARDWARE

